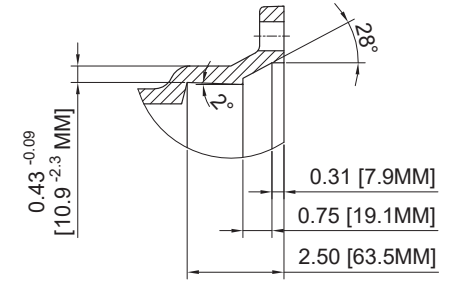
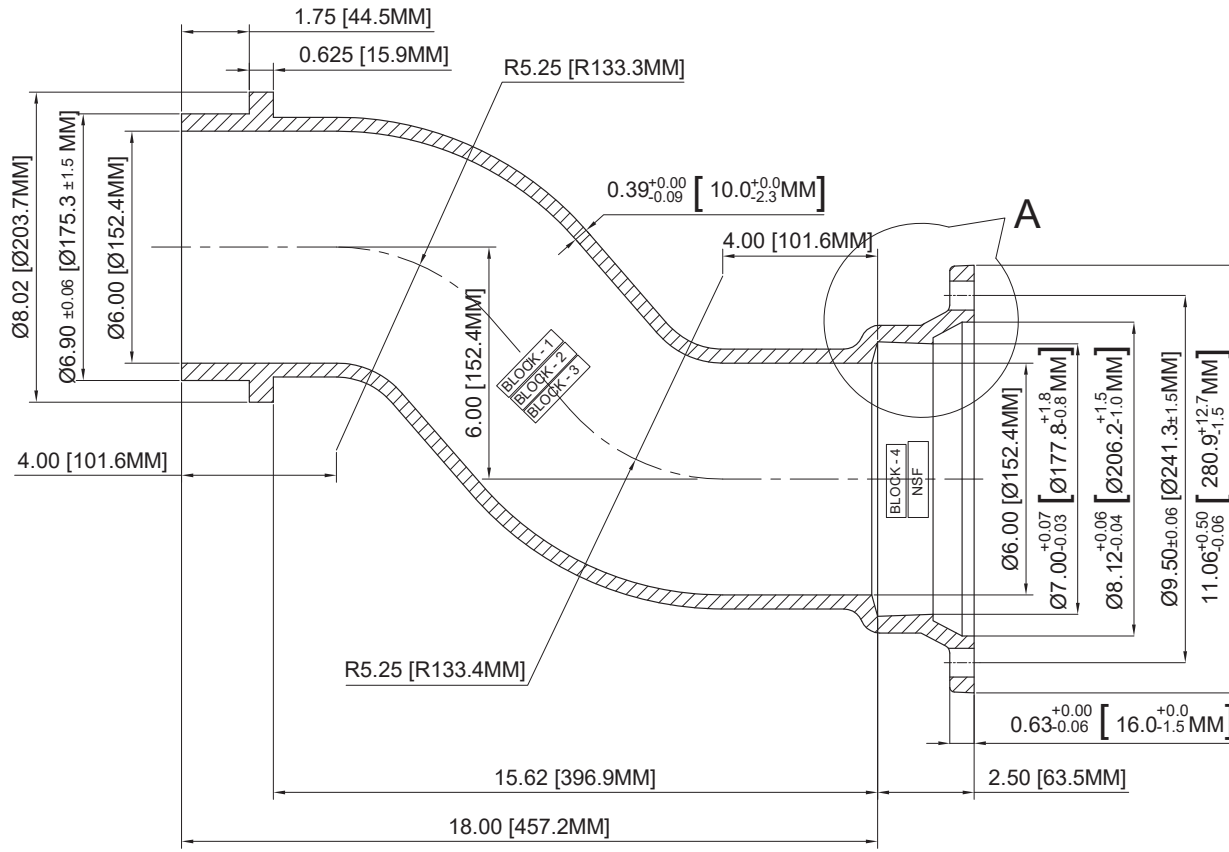


TYP FIRE HYDRANT & GATE VALVE WITH GRADELOK

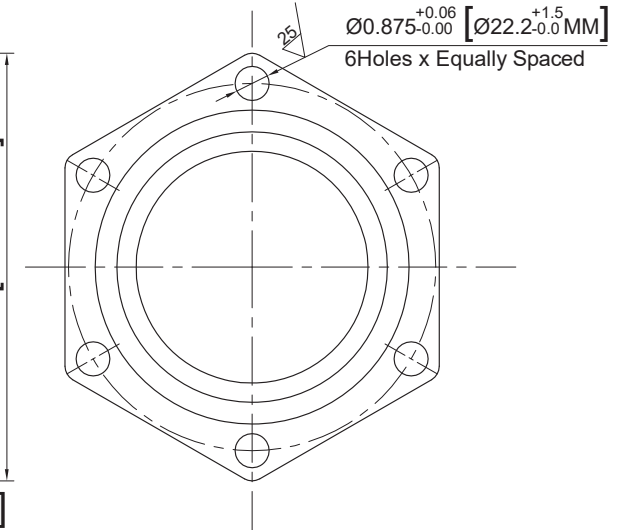
SCALE: NONE

NOTES:-

1. All the dimensions are in inches. Metric units are in parenthesis.
2. Material :- DUCTILE IRON, ASTM-A536, GRADE- 70-50-5 OR 60-42-10
3. The drawing dimensions are as per ANSI/AWWA C153/A21.53
4. Pressure Rating:- 350psi.
5. The cast marks and heat numbers are as per Sigma's requirement which is written in a separate file
6. Cement-Mortar Lining thickness as per ANSI/AWWA C104/A21.4



DETAIL -A



| Rev | Date | Revision Record | Prepared by | Approved by |
|---------|------------|--|-------------|-------------|
| 01 | 11-01-2010 | Collar dimension changed & Wall thickness 0.39" changed to 0.36" | AT1 | SR1 |
| 02 | 11-12-2010 | Wall thickness 0.36" changed to 0.39" | AT1 | SR1 |
| | | | | |
| | | | | |
| | | | | |
| | | | | |
| | | | | |
| | | | | |
| | | | | |
| | | | | |
| RADIUS: | | ±.030 | MACHINED: | .XX±.015 |

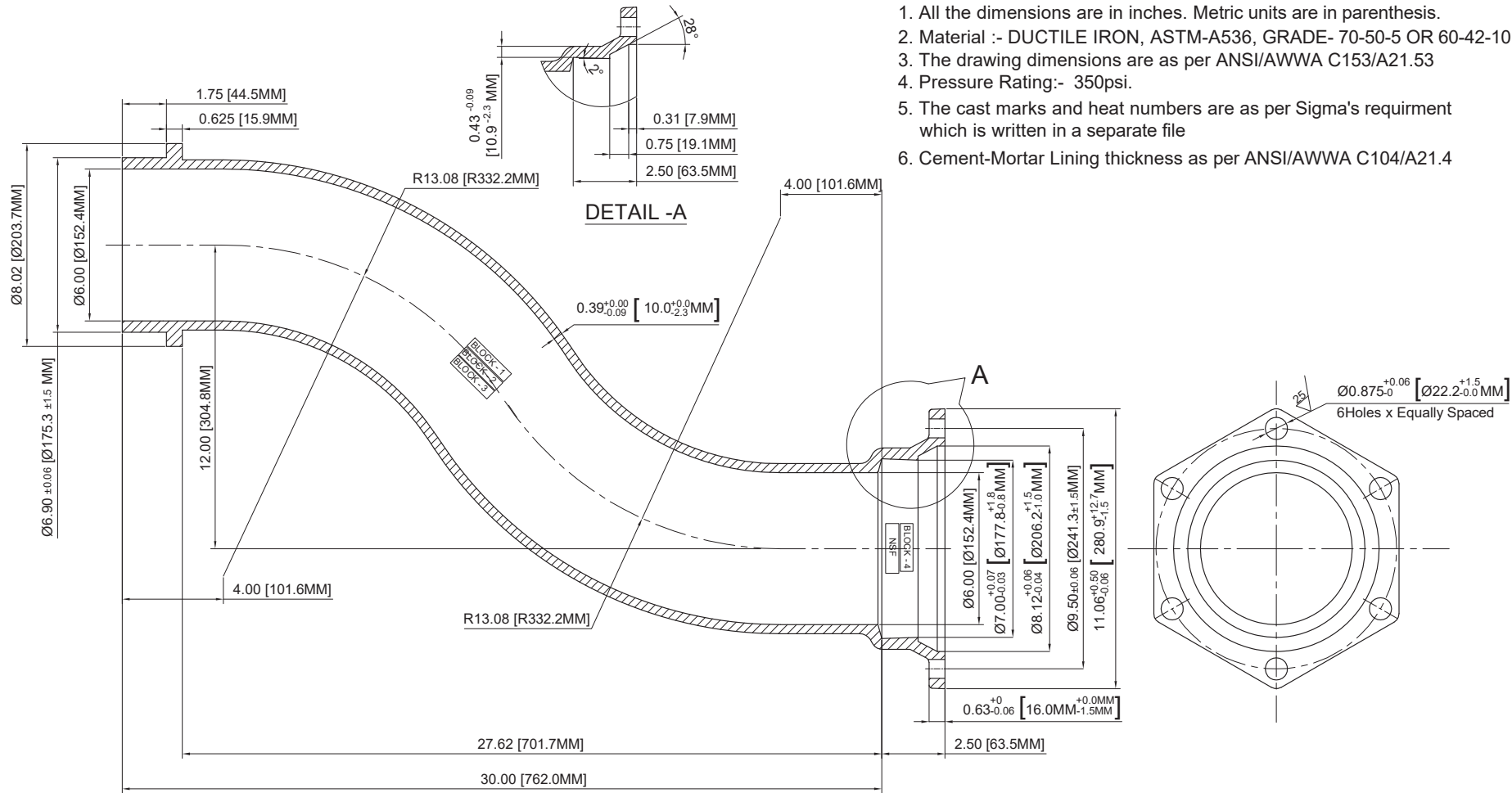
TOLERANCES UNLESS OTHERWISE SPECIFIED

| | |
|------------|--------|
| CAST: | |
| 0"-1" | ±0.04" |
| 0-25mm | ±1mm |
| 1"-4" | ±0.06" |
| 25-100mm | ±1.5mm |
| 4"-16" | ±0.09" |
| 100-400mm | ±2.3mm |
| 18"-30" | ±0.11" |
| 457-762mm | ±2.8mm |
| 36"-60" | ±0.13" |
| 914-1524mm | ±3.3mm |

All Radii & Fillets to be 0.12" (3mm) unless otherwise specified
All Draft angles to be 2° unless otherwise specified on drawing

| | | |
|-----------------------|--|-----------|
| Product Group :- | Ductile Iron Fittings | |
| Coating/Lining:- | Asphaltic Coating/Cement Lined | |
| Type :- | FITTING SIZE AND CAST MARK | |
| Product Description:- | C153 - MJ x PE GRADE LOCK - 6 x 6 inch | |
| Drawing Number :- | GL06MJ | Rev :- 02 |

| | | | | | |
|--------|-----|--------------|------------|---------------|-----|
| | | DATE : | 10-14-2010 | DRAWN BY : | AT1 |
| | | DRAWING FOR: | SUBMITTAL | CHECKED BY : | MSK |
| SCALE: | NTS | SHEET NO: | 1 OF 1 | APPROVED BY : | SR1 |




NOTES:-

1. All the dimensions are in inches. Metric units are in parenthesis.
2. Material :- DUCTILE IRON, ASTM-A536, GRADE- 70-50-5 OR 60-42-10
3. The drawing dimensions are as per ANSI/AWWA C153/A21.53
4. Pressure Rating:- 350psi.
5. The cast marks and heat numbers are as per Sigma's requirement which is written in a separate file
6. Cement-Mortar Lining thickness as per ANSI/AWWA C104/A21.4

| Rev | Date | Revision Record | Prepared by | Approved by |
|------------------------------------|------------|---|-------------|-------------|
| 01 | 11-01-2010 | Overall length, Bend radius & Collar dimensions changed and wall thickness 0.39" changed to 0.36" | AT1 | SR1 |
| 02 | 11-12-2010 | Wall thickness 0.36" changed to 0.39" | AT1 | SR1 |
| | | | | |
| | | | | |
| | | | | |
| | | | | |
| | | | | |
| | | | | |
| | | | | |
| | | | | |
| RADIUS: ±.030 , MACHINED: .XX±.015 | | | | |

| TOLERANCES UNLESS OTHERWISE SPECIFIED | |
|---------------------------------------|--------|
| CAST: | |
| 0"-1" | ±0.04" |
| 0-25mm | ±1mm |
| 1"-4" | ±0.06" |
| 25-100mm | ±1.5mm |
| 4"-16" | ±0.09" |
| 100-400mm | ±2.3mm |
| 18"-30" | ±0.11" |
| 457-762mm | ±2.8mm |
| 36"-60" | ±0.13" |
| 914-1524mm | ±3.3mm |

| | |
|---|---------------------|
| All Radii & Fillets to be 0.12" (3mm) unless otherwise specified All Draft angles to be 2° unless otherwise specified on drawing | |
| Product Group :- Ductile Iron Fittings | |
| Coating/Lining:- Asphaltic Coating/Cement Lined | |
| Type :- FITTING SIZE AND CAST MARK | |
| Product Description:- C153 - MJ x PE GRADE LOCK - 6 x 12 inch | |
| Drawing Number :- GL12MJ | Rev :- 02 |

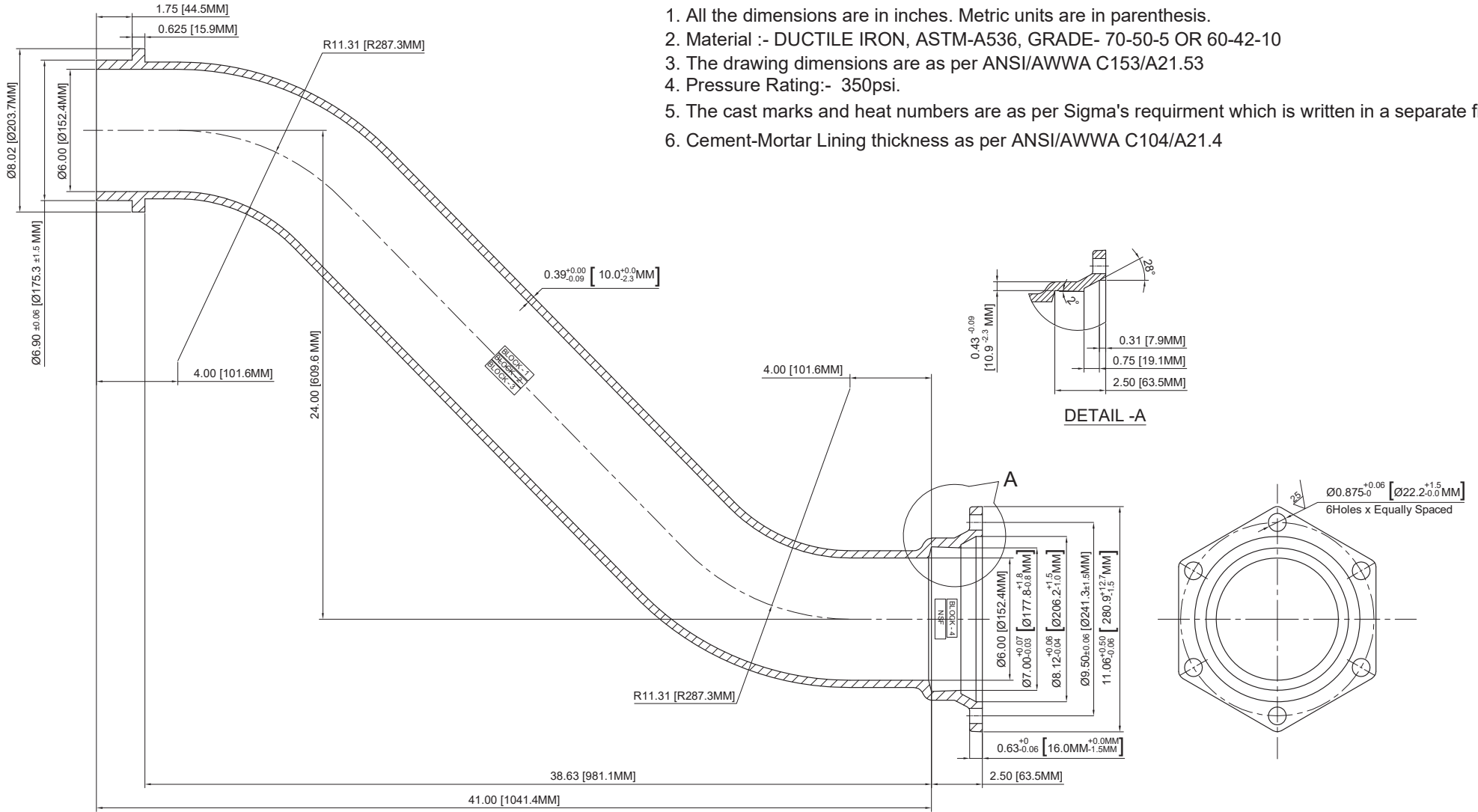


ASSURED FLOW SALES, INC
SARASOTA, FLORIDA

| | | | |
|--------------|------------|---------------|--------------|
| DATE : | 09-08-2007 | DRAWN BY : | AT1 |
| DRAWING FOR: | SUBMITTAL | | CHECKED BY : |
| | | LWL | |
| SCALE: | SHEET NO: | APPROVED BY : | |
| NTS | 1 OF 1 | SR1 | |

NOTES:-

1. All the dimensions are in inches. Metric units are in parenthesis.
2. Material :- DUCTILE IRON, ASTM-A536, GRADE- 70-50-5 OR 60-42-10
3. The drawing dimensions are as per ANSI/AWWA C153/A21.53
4. Pressure Rating:- 350psi.
5. The cast marks and heat numbers are as per Sigma's requirement which is written in a separate file
6. Cement-Mortar Lining thickness as per ANSI/AWWA C104/A21.4



| Rev | Date | Revision Record | Prepared by | Approved by |
|------------------------------------|------------|---|-------------|-------------|
| 01 | 11-01-2010 | Overall length, Bend radius & Collar dimensions changed and wall thickness 0.39" changed to 0.36" | AT1 | SR1 |
| 02 | 11-12-2010 | Wall thickness 0.36" changed to 0.39" | AT1 | SR1 |
| | | | | |
| | | | | |
| | | | | |
| | | | | |
| | | | | |
| | | | | |
| | | | | |
| | | | | |
| RADIUS: ±.030 , MACHINED: .XX±.015 | | | | |

TOLERANCES UNLESS OTHERWISE SPECIFIED

| CAST: | Tolerance |
|------------|-----------|
| 0"-1" | ±0.04" |
| 0-25mm | ±1mm |
| 1"-4" | ±0.06" |
| 25-100mm | ±1.5mm |
| 4"-16" | ±0.09" |
| 100-400mm | ±2.3mm |
| 18"-30" | ±0.11" |
| 457-762mm | ±2.8mm |
| 36"-60" | ±0.13" |
| 914-1524mm | ±3.3mm |

All Radii & Fillets to be 0.12" (3mm) unless otherwise specified
All Draft angles to be 2° unless otherwise specified on drawing

Product Group :- **Ductile Iron Fittings**

Coating/Lining:- **Asphaltic Coating/Cement Lined**

Type :- **FITTING SIZE AND CAST MARK**

Product Description:- **C153 - MJ x PE GRADE LOCK - 6 x 24 inch**

Drawing Number :- **GL24MJ** Rev :- **02**

ASSURED FLOW SALES, INC.
SARASOTA, FLORIDA

DATE : **03-14-2007** DRAWN BY : **AT1**

DRAWING FOR: **SUBMITTAL** CHECKED BY : **LWL**

SCALE: **NTS** SHEET NO: **1 OF 1** APPROVED BY : **SR1**